

## Suite Brochure



### Building Information

Year of construction:  
2019

Number of floors:  
3

Total office space:  
15208 sf

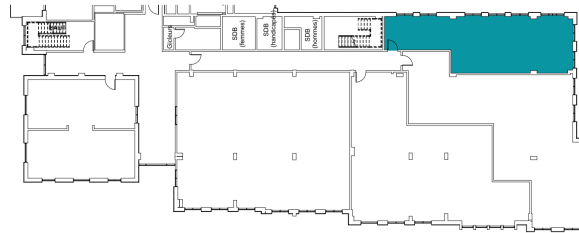
Total space:  
20336 sf

External public transport:  
no

Number of elevators:  
1

### Maison Wickham - Suite 2400

662, avenue Victoria, Saint-Lambert,



**Type**  
Office

**Size**  
1038 sf

**Availability**  
Immediately

**Rate**  
[Inquire](#)

#### Notes regarding the suite

**Term 10 years:**  
Available on demand

**Term 5 years :**  
Available on demand

**Additional Rent :**  
Available on demand

For more information, feel free to contact us at :

(450) 671-6300 #23